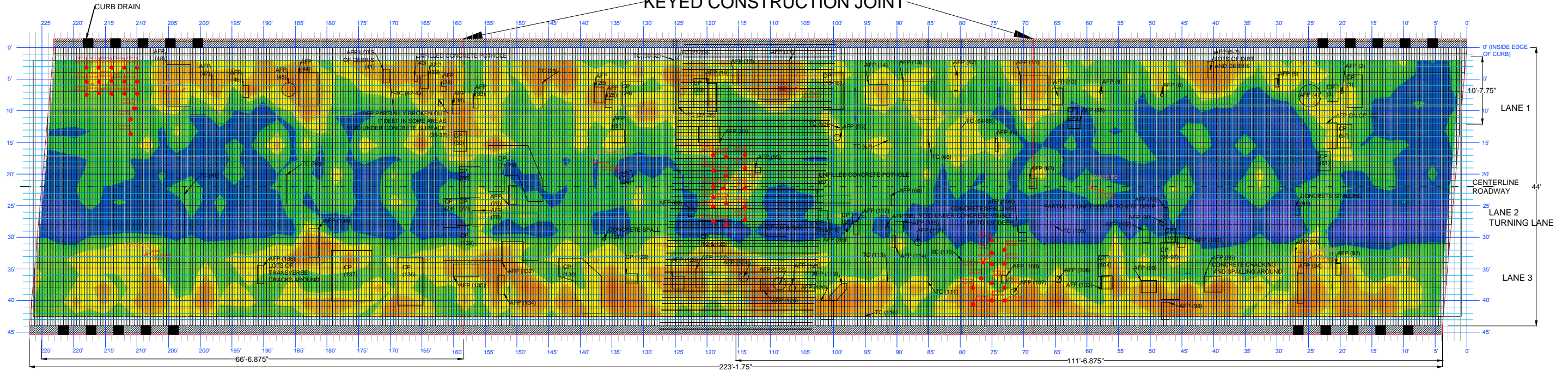


TO MO 32 AT LYNCHBURG

TOPMOST LAYER:
#5 (DIAMETER=0.625")
DIRECTION: TRANSVERSE
SPACING: 5" O.C
1-7/8" CLEAR COVER
2ND LAYER:
#4 (DIAMETER=0.5")
DIRECTION: LONGITUDINAL
SPACING: 12" O.C.

LONGITUDINAL REINFORCEMENT OVER BENT
TOP LAYER ONLY
#4 (DIAMETER=0.5")
SPACING: 12" O.C
STARTING 10.5" FROM EDGE OF DECK

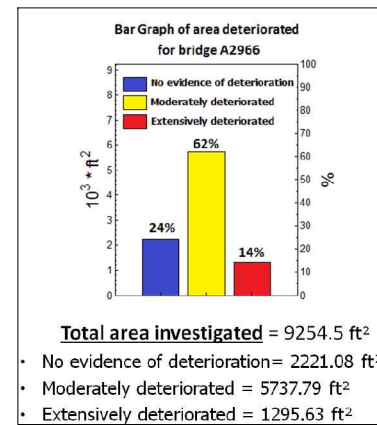
KEYED CONSTRUCTION JOINT



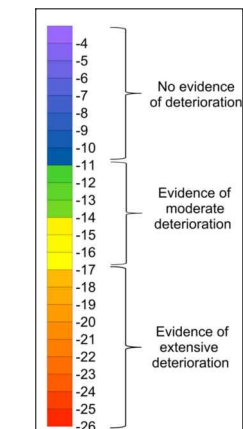
SPAN 1

TO MOUNTAIN GROVE

SPAN 2



GPR REFLECTION AMPLITUDE FROM TOP LAYER OF REINFORCEMENT SCALE



MISSOURI S&T NONDESTRUCTIVE EVALUATION OF BRIDGE DECKS - PILOT STUDY
TASK ORDER CONTRACT NO. TRY1308
BRIDGE NO: A2966
FACILITY CARRIED: MO 95
DATE INVESTIGATED: 10-15-2012

COMMENTS:

CP=CONCRETE PATCH
AFP=ASPHALT FILLED POTHOLE
TC=TRANSVERSE CRACK
PSPA E-W AND N-S CORRESPONDS TO DIRECTION OF TEST (EAST AND WEST, NORTH AND SOUTH)
NUMBERS IN PARENTHESIS CORRESPONDS TO PHOTOGRAPHS